



JSB EQUIPMENT



体系认证



质量管理体系认证



专利证



CE认证



# COMPANY PROFILE

## 公司简介

JSB Equipment Pte Ltd is a leading manufacturer for excavator attachments in China. All products' quality are strictly under control from processing to delivery. By continuous innovation and improvement, the company has got ISO 9001, CE certifications and technical patents successively. Our products have been sold to domestic and oversea customers including Russia, Japan, Korea, Malaysia, India, Australia, Isreal, etc, and long term partnerships have been developed.

Our mission is: Quality first, Service foremost, and Innovation paramount. Uncompromising commitment to high quality and thoughtful service wins us a good reputation and more coming partners. And we will keep on improving the products to better serve the world market. We are looking forward to working with you!



## STRUCTURE AND FEATURES

### Structure and Features

■ The key indexes of a hydraulic breaker is the hit frequency and hit energy. Each model of Rewin II series is equipped with powerful hit system hydraulic & nitrogen, with high efficiency, low power loss, and maximum twice-hit energy, which provide great hit energy.

### Hit Energy Improved Structure

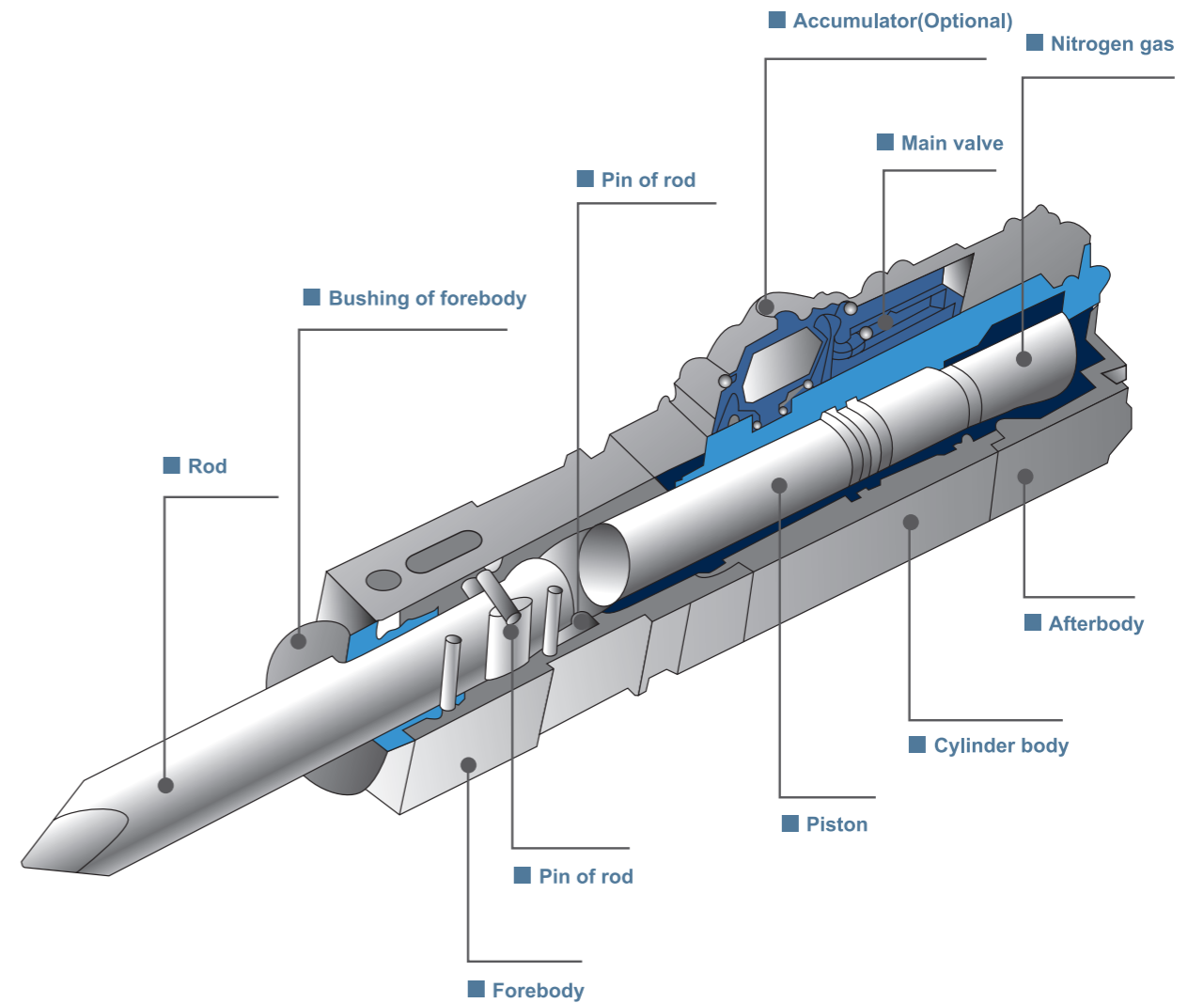
■ The outstanding design longer the running distance of piston and main body, making the breaker a maximum matching rate with the mainframe.

### Flow Adjustable Device

■ The device gives effective adjustment of the flow from the grab or power source, which enable the adjustments according to the hardness of rocks, high hit energy with low hit frequency, low hit energy with high hit frequency.

### High-Quality Materials & Specially Precise Process

■ Special precise process ensures the sealing, great hit energy and outbreak force, with high-quality materials ensuring durability.





**BOX TYPE**



**TOP TYPE**



**SIDE TYPE**



**BOX TYPE**



**TOP TYPE**



**SIDE TYPE**

Item		Unit	SMALL MODEL				
			RWB40	RWB45	RWB53	RWB68	RWB75
Weight	Box type	Kg	-	-	-	330	465
	Top type		70	90	120	295	520
	Side type		73	100	120	280	460
Impact Frequency		bpm	800~1400	700~1200	600~1100	500~900	400~800
Operating Oil Pressure		bar	90~120	90~120	90~120	110~140	120~150
Relief		bar	120~150	120~150	120~150	150~170	170~180
Operating Flux		l/min	15~30	20~40	40~70	40~70	45~85
Rod Diameter		mm	40	45	68	68	75
Size of Tube		inch	0.5	0.5	0.5	0.5	0.5
Applicable Excavator		ton	0.8~2.5	1.2~3.0	2.0~4.5	4.0~7.0	6.0~9.0

Item		Unit	MEDIUM MODEL			
			RWB100	RWB120	RWB135A	RWB140A
Weight	Box type	Kg	970	1000	1640	1870
	Top type		930	1000	1550	1980
	Side type		887	980	1450	1750
Impact Frequency		bpm	350~700	350~650	400~800	400~800
Operating Oil Pressure		bar	150~170	150~170	160~180	160~180
Relief		bar	190~200	190~200	200~210	200~210
Operating Flux		l/min	80~110	90~120	105~150	125~150
Rod Diameter		mm	100	120	135	140
Size of Tube		inch	0.75	1	1	1
Applicable Excavator		ton	11.0~16.0	15.0~18.0	18.0~25.0	18.0~25.0



Brand	JSB
Model	SD45U
Operating mode	Hydraulic lever
Operating weight	4350kg
Bucket capacity	0.11cbm
Bucket width	600 mm(Any size can be customized )
Engine	Yanmar 3TNV88 , 21.4kw/4400r/min
Pump	NACHI (JAPAN)
Valve	NABTESCO (JAPAN)
Walking motor	NACHI (JAPAN)
Rotary motor	NACHI (JAPAN)
Cylinder	Three cylinder, Water cooling
Walking speed	2.8km/h/4.8km/h
Track type	Rubber Track
Closed cab	NO
Climb ability	35°
Bucket digging force	20.55kn
Arm digging force	17kn
Physical Size	
Total (length*width*height)	4825x1740x2520 mm
Track length*width	2105mm*300mm
Dozer blade size	1740*355 mm
Chassis width	1160 mm
Working Range	
Max.digging depth	3410 mm
Max.digging height	5000 mm
Max.digging radius	5300 mm



Brand	JSB
Model	SD65E
Operating mode	Hydraulic lever
Operating weight	5580kg
Bucket capacity	0.28cbm
Bucket width	730 mm(Any size can be customized )
Engine	Yanmar 4TNV94L , 37kw
Pump	DOOSAN MBFB378B (Korea)
Valve	Parker (USA)
Walking motor	EATON (USA)
Rotary motor	EATON (USA)
Cylinder	Four cylinder, Water cooling,Direct injection
Walking speed	2.5-4.5km/h
Track type	Steel Track
Closed cab	Yes
Climb ability	35°
Bucket digging force	37.7kn
Arm digging force	28.4kn
Physical Size	
Total (length*width*height)	5580x1880x2575 mm
Track length*width	2540mm*400mm
Minimum ground distance	350 mm
Chassis width	1810mm
Working Range	
Max.digging depth	3820 mm
Max.digging height	5760 mm
Max.digging radius	6150 mm
Min. radius of gyration	2100 mm

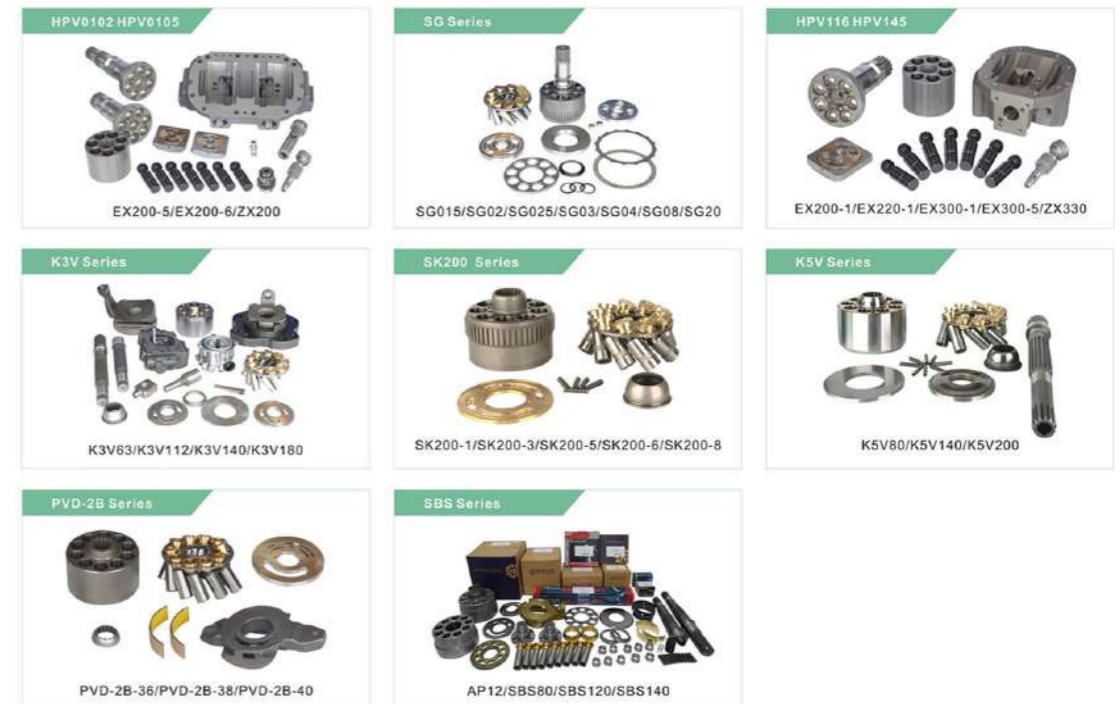


Brand	JSB
Model	SD25U
Operating mode	Hydraulic lever
Operating weight	2420Kg
Bucket capacity	0.1cbm
Bucket width	450mm(Any size can be customized)
Engine	Perkins(UK) 403D-11 , 14.7kw/2200r/min can choose yanmar engine
Pump	Taifeng
Valve	HUSCO ( USA )
Walking motor	Wolf LTM-03c
Rotary motor	EATON SW2K-195 (USA)
Cylinder	Three cylinder, Water cooling
Walking speed	2.5-3.5km/h
Track type	Rubber Track/Steel Track
Closed cab	No
Climb ability	35°
Bucket digging force	16.5kn
Arm digging force	14.1kn
<b>Physical Size</b>	
Total (length*width*height)	3950*1400*2300mm
Track length*width	1870*250mm
Platform ground distance	430 mm
<b>Working Range</b>	
Max.digging depth	2550 mm
Max.digging height	4300 mm

HYDRAULIC PUMP ASS'Y SERIES



HYDRAULIC SPARE PARTS SERIES

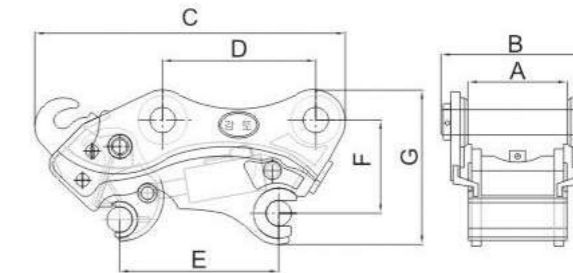


GEAR PARTS SERIES

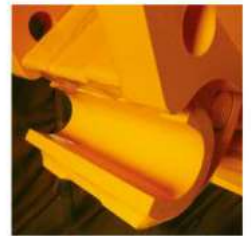
>> EX200-5  Travel Motor Housing	>> SK250-8  Travel Motor Housing	>> ZAX330-3  Travel Motor Housing	>> SH200  Drive Plate
>> PC200-7  Drive Plate	>> DX300-7  Drive Plate	>> SK200-8  Swing Motor Housing	>> PC240-8  Swing Motor Housing
>> DH370  Swing Motor Housing	>> PC360-7  1st and 2nd Level Travel Assy	>> R305-7  1st and 2nd and 3rd Level Travel Assy	>> ZAX330-3  1st and 2nd and 3rd Level Travel Assy
>> DH300-7  1st Level Swing Assy	>> E320C  2nd Level Swing Assy	>> SK200-8  2nd Level Swing Assy	
>> DH200-7  Throttle Motor	>> DH215-7  Computer Board	>> EC210  Engine Controller	>> EC210B  Monitor
>> PC200-6  Monitor (6D95)	>> PC200-7  PC228US-3 PC220-7 PC300-7 Monitor	>> PC200-8  Monitor	>> R225-7  21N8-35002 Monitor
>> SK200-6  Monitor	>> SK200-8  Monitor	>> SK250-8  Controller	>> ZX200  9239568 Controller
>> ZX200-3  9292112 Controller	>> E320C  Monitor	>> VOLVO  Air Conditioner Control Board	

ELECTRIC PARTS SERIES

P型快速连接器  
P TYPE QUICK HITCH COUPLER



安全销更加精准、牢固、安全  
Strong safety pin at accurate position.



伸缩虎口更加耐磨，更加坚固，防止断裂  
High-abrasive front tiger mouth design.



类别 Category	Unit	JT-mini	JT-02	JT-04	JT-06	JT-08	JT-08S	JT-10	JT-17
总长度C Length C	mm	300-450	520-542	581-610	760	920-955	950-1000	965-1100	1005-1150
总宽度B Width B	mm	150-250	260-266	265-283	351-454	450-483	445-493	543-572	602-666
总高度G Height G	mm	225-270	312	318	400	512	512-540	585	560-615
小臂开档A Arm width A	mm	82-180	155-172	181-205	230-317	290-345	300-350	345-425	380-480
轴中心距D Pins center distance	mm	95-220	220-275	290-350	350-400	430-480	450-505	485-530	520-630
轴直径 Pin diameter	mm	20-45	40-45	45-55	50-70	70-90	90	90-100	100-110
油缸伸缩距离E Cylinder stroke E	mm	95-200	200-300	300-350	340-440	420-510	450-530	460-560	500-650
上下轴间距F Vertical pins center distance	mm	170-190	200-210	205-220	240-255	300	320	350-370	370-380
重量 Weight	kg	30-40	50-75	80-110	170-210	350-390	370-410	410-520	550-750
工作压力 Working pressure	kgf/cm <sup>2</sup>	30-400	30-400	30-400	30-400	30-400	30-400	30-400	30-400
必要流量 Necessary flow	l	10-20	10-20	10-20	10-20	10-20	10-20	10-20	10-20
适用于挖机吨位 Excavator	ton	1-4	4-6	6-8	12-16	18-25	25-26	26-30	30-40

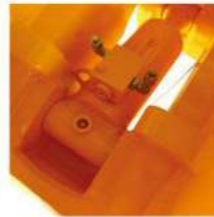
具体数据根据挖掘机型号及所配设备尺寸有所浮动，产品不断改进升级中，数据改动不再另行通知。  
The specifications may vary with different excavators and are subject to change without prior notice for products improvement.

## H型快速连接器 H TYPE QUICK HITCH COUPLER



进口油缸使用更持久，更耐用

Reinforced cylinder with imported oil seals. (Simrit Germany brand)



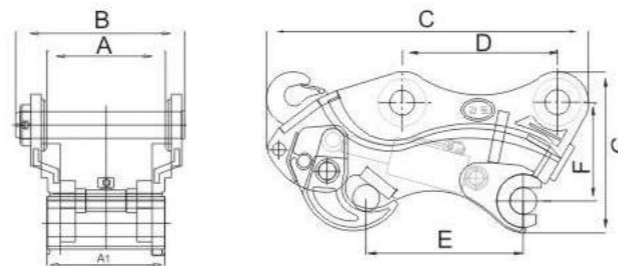
销轴保性能更好

All pins undergo heat treatment



固定虎口更加坚固耐磨

Super high-abrasive rear tiger mouth, long service life.



类别 Category	Unit	JT-02	JT-04	JT-06	JT-08	JT-08S	JT-10	JT-17	JT-20
总长度C Length C	mm	550-600	580-650	810-830	950-970	970-1100	1082-1150	1150-1200	1250-1400
总宽度B Width B	mm	280-300	290-310	400-420	460-480	480-600	590-615	610-640	650-760
总高度G Height G	mm	295-310	300-330	385-400	445-470	500-540	510-545	540-585	685-780
小臂开档A Arm width A	mm	155-172	181-205	230-317	290-345	300-350	345-425	380-480	420-520
轴中心距D Pins center distance	mm	220-275	290-350	350-400	430-480	450-505	485-530	520-630	620-750
轴直径 pin diameter	mm	40-45	45-55	50-70	70-90	90	90-100	100-110	100-140
油缸伸缩距离E Cylinder stroke E	mm	250-280	300-330	360-390	450-480	480-510	500-540	560-600	640-700
上下轴间距F Vertical pins center distance	mm	200-210	205-220	240-255	300-310	300-320	350-370	370-380	400-500
重量 Weight	kg	70-100	100-120	200-220	350-400	360-420	400-550	600-800	700-1000
工作压力 Working pressure	kgf/cm <sup>2</sup>	30-400	30-400	30-400	30-400	30-400	30-400	30-400	30-400
必要流量 Necessary flow	l	10-20	10-20	10-20	10-20	10-20	10-20	10-20	10-20
适用于挖机吨位 Excavator	ton	4-6	6-8	12-16	18-25	25-26	26-30	30-40	40-90



10 具体数据根据挖掘机型号及所配设备尺寸有所浮动，产品不断改进升级中，数据改动不再另行通知。  
The specifications may vary with different excavators and are subject to change without prior notice for products improvement.

## 振动压路机 VIBRATORY ROAD ROLLER



FYL-1200  
(2900kg)



FYL-900  
(1700kg)



FYL-890  
(1000kg)



FYL-880  
(1000kg)



FYL-850  
(800kg)



FYL-800  
(800kg)



FYLJ-S600C  
(550kg)



FYL-S600  
(550kg)



FYL-750  
(500kg)



FYL-600  
(325kg)



FYL-600C  
(325kg)

具体数据根据挖掘机型号及所配设备尺寸有所浮动，产品不断改进升级中，数据改动不再另行通知。  
The specifications may vary with different excavators and are subject to change without prior notice for products improvement.

## ELECTRIC FORKLIFT



4.5-6.0 TON ELECTRIC FORKLIFT MAST												
Type	Model	Lift Height (mm)	Load Capacity(kg)			Overall Height(mm)				Free Lift(mm)		
			4.5t	5.0t	6.0t	4.5-6.0t		4.5-6.0t		4.5-6.0t		
						Mast Lowered	Mast Extended		Mast Extended			
							With Backrest	Without Backrest	With Backrest	Without Backrest		
Wide view 2-stage mast	M250	2500	4500	5000	6000	2120	3865	355	-	-		
	M300	3000	4500	5000	6000	2270	4165	3850	-	-		
	M330	3300	4500	5000	6000	2420	4465	4150	-	-		
	M350	3500	4500	5000	6000	2520	4665	4350	-	-		
	M370	3700	4500	4800	5900	2620	4865	4550	-	-		
	M400	4000	4500	4800	4700	2820	5165	4850	-	-		
	M450	4500	4000	4300	4600	3070	5665	5350	-	-		
	M600	6000	3600	3900	4200	3320	6165	5850	-	-		
Full free 2-stage mast	M650	5500	3000	3400	3800	3620	6665	6350	-	-		
	M800	6000	2500	2800	2700	3870	7165	6850	-	-		
	Z250	2500	4000	5000	6000	2120	3865	3550	845	1295		
	Z300	3000	4000	5000	6000	2270	4165	3850	995	1445		
	Z330	3300	4000	5000	6000	2420	4465	4150	1145	1595		
	Z350	3500	4000	5000	6000	2520	4665	4350	1245	1695		
	Z370	3700	4000	4800	5600	2620	4865	4550	1345	1795		
	Z400	4000	4300	4600	4900	2820	5165	4850	1495	1945		
Full free 3-stage mast	S370	3700	4400	4800	5200	2005	4880	4550	835	1350		
	S400	4000	4300	4500	4700	2105	5180	4850	935	1450		
	S435	4350	4100	4300	4500	2220	5530	5200	1050	1555		
	S450	4500	3900	4200	4500	2270	5680	5350	1100	1615		
	S480	4800	3800	4000	4200	2370	5980	5650	1200	1715		
	S500	5000	3600	3800	4000	2435	6180	5850	1265	1780		
	S550	5500	2900	3100	3300	2600	6680	6350	1430	1945		
	S600	6000	2400	2500	2600	2870	7180	6850	1700	2215		

### 4.5-6.0 TON 4-WHEEL ELECTRIC FORKLIFT

General		Model	FB45	FB50	FB60	
1	Power Type		Electric	Electric	Electric	
2	Rated Capacity	kg	4500	5000	6000	
3	Load Centre	mm	500	500	500	
4	Lift Height	mm	3000	3000	3000	
5	Fork Size	L×W×T	1070×150×50	1070×150×50	1070×150×50	
6	Mast Tilt Angle	F/R	6°/9°	6°/9°	6°/9°	
7	Front Overhang (Wheel Center to fork face)	mm	555	555	555	
8	Tread	F/R	1280/1190	1280/1190	1280/1190	
9	Ground Clearance (Bottom of mast)	mm	160	160	160	
10	Fork Spread	Min./Max	300/1380	300/1380	300/1380	
11	Overall Dimension	Length to face of fork(Without fork)	3030	3030	3030	
12		Overall Width	1600	1600	1600	
13		Mast Lowered Height	2330	2330	2330	
14	Overall Dimension	Mast Extended Height(With backrest)	4255	4255	4255	
15		Overhead Guard Height	2255	2255	2255	
16	Turning Radius(outside)	mm	2755	2755	2755	
17	Min. insecting aisle	mm	2955	2955	2955	
18	Performance	Travel(Empty load)	14	14	14	
19		Lifting(Full load)	250	220	220	
20		Max. Gradeability	%	15	15	15
21	Chassis	Front	2.8×12.5-15-24PR	2.8×12.5-15-24PR	2.8×12.5-15-24PR	
22		Rear	7.00-12-14PR	7.00-12-14PR	7.00-12-14PR	
23		Wheel Base	mm	2000	2000	2000
24	Service Weight	kg	7500	7800	8200	
25	Power & Transmission	Drive Motor	kw	9.1×2	9.1×2	9.1×2
26		Lift Motor	kw	25.4	25.4	25.4
27		Voltage/Capacity	V/Ah	80/600	80/700	80/800
28	Controller	Manufacturer	CURTIS	CURTIS	CURTIS	
29		Type	AC	AC	AC	
30	Operating Pressure for Attachment	Mpa	17.5	17.5	17.5	

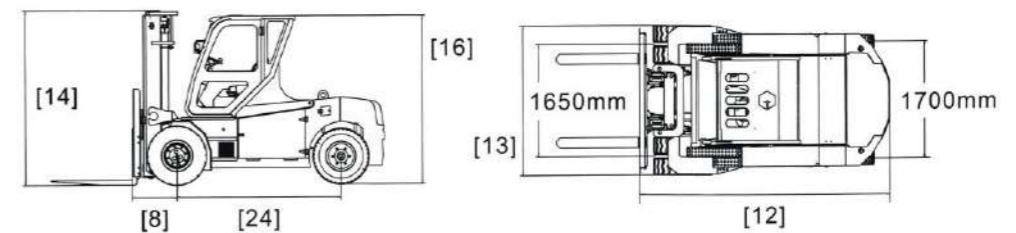


## ELECTRIC FORKLIFT



### 8.0-12.0 TON 4-WHEEL ELECTRIC FORKLIFT

General		Model	FB80	FB100	FB120
1	Power Type		Electric	Electric	Electric
2	Rated Capacity	kg	8000	10000	12000
3	Load Centre	mm	600	600	600
4	Lift Height	mm	3000	3000	3000
5	Fork Size	L×W×T	1220×150×70	1520×175×85	1520×180×100
6	Mast Tilt Angle	F/R	6°/10°	6°/10°	6°/10°
7	Front Overhang (Wheel Center to fork face)	mm	650	750	750
8	Tread	F/R	1650/1700	1650/1700	1650/1700
9	Ground Clearance (Bottom of mast)	mm	160	210	210
10	Fork Spread	Min./Max	300/2000	515/2055	515/2055
11	Characteristic & Dimension	Length to face of fork(Without fork)	3680	4480	4480
12		Overall Width	2200	2270	2270
13		Mast Lowered Height	2600	2810	2810
14	Overall Dimension	Mast Extended Height(With backrest)	4550	4550	4550
15		Overhead Guard Height	2500	2650	2650
16	Turning Radius(outside)	mm	3350	3850	3850
17	Min. insecting aisle	mm	3040	3200	3200
18	Performance	Travel(Empty load)	15	15	15
19		Lifting(Full load)	275	260	220
20		Max. Gradeability	%	15	10
21	Chassis	Front	9.00-16	9.00-20	9.00-20
22		Rear	8.25-15	8.25-20	8.25-20
23		Wheel Base	mm	2450	2850
24	Service Weight	kg	12780	16710	16910
25	Power & Transmission	Drive Motor	2×14(BEST MOTOR)	2×20(SCHABMULLER)	2×20(SCHABMULLER)
26		Lift Motor	2×25(SCHABMULLER)	2×28(SCHABMULLER)	2×28(SCHABMULLER)
27		Voltage/Capacity	V/Ah	80/1150	96/1250
28	Controller	Manufacturer	CURTIS	CURTIS	CURTIS
29		Type	AC	AC	AC
30	Operating Pressure for Attachment	Mpa	17.5	17.5	17.5





## 破碎钳 FIXED PULVERISER

### 适用对象

粉碎碎房屋梁柱；水泥杆等。

### 特点

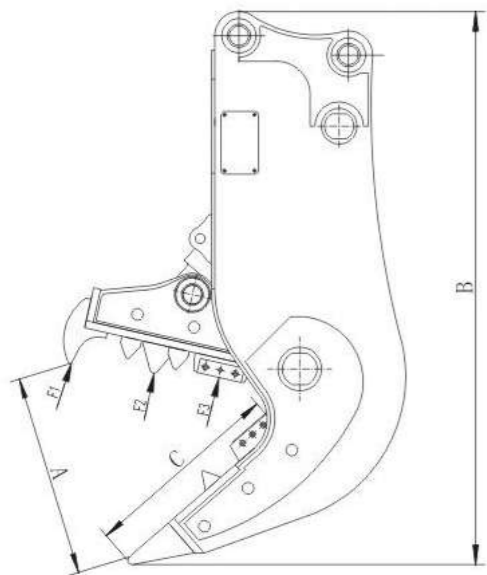
- 材料选用悍达NM400-500耐磨板；精加工；破碎和剪断钢筋一体功能，不变形。破碎力量大。
- 可增加360度选择功能。

### Application

Crush beam columns and concrete building materials.

### Main features

- Material Hadox 400-500;high precision;with both crush and cut functions.Durable in use.
- 360°rotation function available.



类别	Category	Unit	JT-06	JT-08	JT-10
A		mm	710	850	930
B		mm	1940	2287	2540
C		mm	720	820	910
破碎力 F1	Crushing force	ton	65	80	90
破碎力 F2	Crushing force	ton	100	130	150
破碎力 F3	Crushing force	ton	150	200	247
工作压力	Oil pressure	MPa	25-30	25-30	25-30
适用挖机	Excavator weight	ton	12-16	18-27	28-38
重量	Weight	kg	1300-1400	1800-2000	2000-2100
圆钢符号		mm	25	30	35

14 具体数据根据挖掘机型号及所配设备尺寸有所浮动，产品不断改进升级中，数据改动不再另行通知。  
The specifications may vary with different excavators and are subject to change without prior notice for products improvement.

## 拆车剪 HYDRAULIC CAR SCRAP SHEAR

### 适用对象

拆废钢；分解报废车；拆除钢结构建筑物。

### 特点

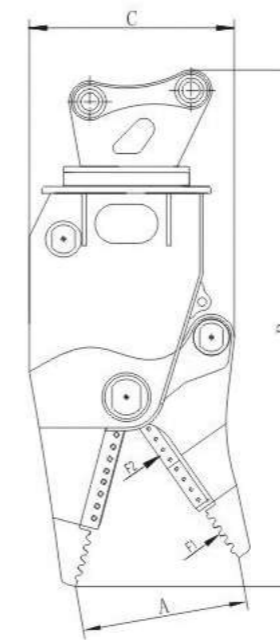
- 材料选用悍达NM400-500耐磨板；精加工；耐用坚固不变形；
- 刀片不易碎；前端设计鳄鱼嘴式撕咬功能。
- 可增加360度选择功能。

### Application

Can be used to split scraped car and steel products.

### Main features

- Material Hadox 400-500;High precision;more durable in use.
- High quality blade. Can snap like a crocodile.
- 360°rotation function available.



类别	Category	Unit	JT-06	JT-08	JT-10
A		mm	685	760	840
B		mm	2140	2380	2600
C		mm	850	945	1040
剪切力F1	Crushing force	ton	40	51	60
剪切力F2	Crushing force	ton	105	122	150
工作压力	Oil pressure	MPa	20-25	25-30	25-30
适用挖机	Excavator weight	ton	10-16	18-27	28-38
重量	Weight	kg	1400-1600	1700-1800	2200-2500

具体数据根据挖掘机型号及所配设备尺寸有所浮动，产品不断改进升级中，数据改动不再另行通知。  
The specifications may vary with different excavators and are subject to change without prior notice for products improvement.

## 液压剪 HYDRAULIC CRUSHER

### 适用对象

破碎拆除化工设备；破碎拆除房屋；

### 特点

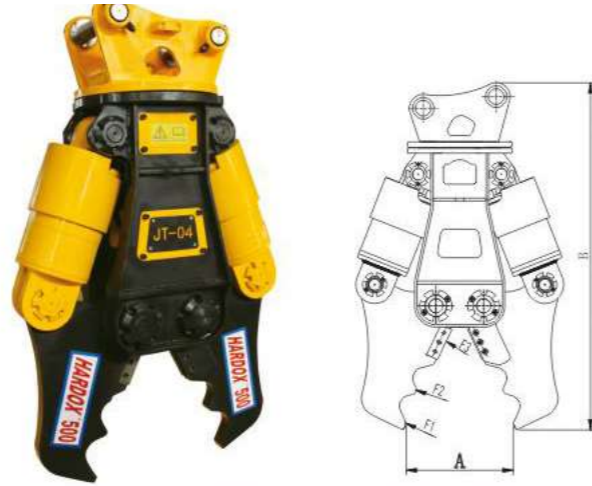
- 刀牙选用悍达NM400-500耐磨板；耐用；破碎力大；加工精度高；不易变形。
- 可增加360度选择功能。

### Application

Can be used to demolish buildings and constructions.

### Main features

- Material Hadox 400-500; High precision; more durable in use.
- 360° rotation function available.



类别 Category	Unit	JT-MINI	JT-02	JT-08	JT-10
A	mm	300	450	1100	1100
B	mm	835	1465	2200	2400
破碎力F1 Crushing force	ton	18	34	84	92
破碎力F2 Crushing force	ton	25	51	127	142
破碎力F3 Crushing force	ton	65	141	300	350
工作压力 Oil pressure	MPa	21	20-25	25-30	25-30
适用挖机 Excavator weight	ton	1.5-3	5-10	18-27	28-38
重量 Weight	kg	200-210	600-650	1800-2000	2500-2800
圆钢符号	mm	14	16	30	35

## 钢材剪 HYDRAULIC SCRAP SHEAR

### 适用对象

剪切各种钢结构，用于废钢厂，报废汽车厂，化工厂。

### 特点

- 刀牙选用悍达NM400-500耐磨板；耐用；破碎力大；加工精度高；不易变形。
- 可增加360度选择功能。

### Application

widely used in steel scrap and scrap car factories.

### Main features

- NM400-500 steel. Durable in use, high level machining precision and high breaking capacity.
- 360° rotation function available.



类别 Category	Unit	JT-02	JT-04	JT-06	JT-08	JT-10
A	mm	300	350	415	515	625
B	mm	565	875	1115	1270	1560
破碎力F1 Crushing force	ton	9	20	41	70	100
破碎力F2 Crushing force	ton	13	30	64	113	145
破碎力F3 Crushing force	ton	31	64	157	236	393
工作压力 Oil pressure	MPa	20-25	20-25	25-28	28-30	28-30
适用挖机 Excavator weight	ton	2-4	5-10	12-17	18-27	28-38
重量 Weight	kg	200-300	600-650	1200-1300	1900-2100	2800-3000
圆钢符号	mm	15	20	25	30	35
板条	mm	6	8	10	12	16
H钢	mm	50	70	100	140	200

# Sales, Rental & Servicing



CompAir Dealer



Hydraulic Pump



Excavator



Roller



Boom Lift & Scissor Lift



Excavator



Hydraulic Pump



8 to 15 ton  
Electric Forklift



Travel Gearbox



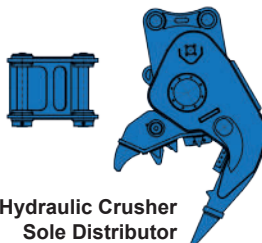
Forklift



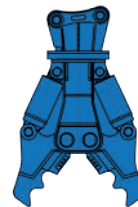
Final Drive



NUOSEN  
HYDRAULIC BREAKER  
SOLE DISTRIBUTOR



Jiangtu Hydraulic Crusher  
Sole Distributor



Demolition Shear  
Sole Distributor

**MICHAEL ONG**  
Sales Director

HP: +65 9740 5526 TEL: +65 6589 8961 HP: +65 8283 5853  
EMAIL: MICHAEL@JSBEQUIPMENT.SG WEBSITE: WWW.JSBEQUIPMENT.SG  
ADDRESS: 31 TOH GUAN ROAD EAST, LW TECHNOCENTRE #07-04, S(608608)

*bizSAFE*



**JSB EQUIPMENT**  
JSB EQUIPMENT PTE LTD